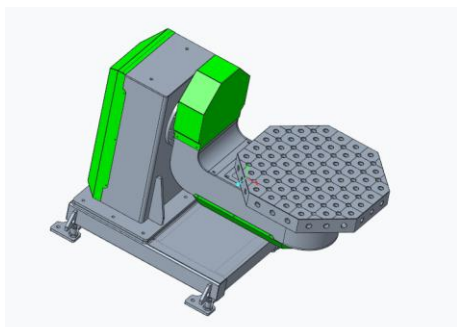


# L-TypeC

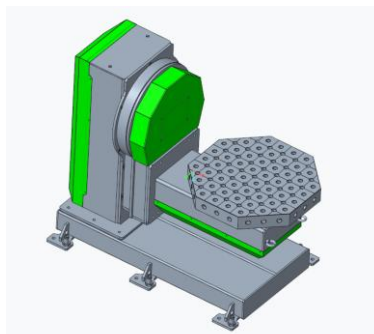
## technical data

<b>Standard load capacity</b>		250kg / 500kg / 1000kg
<b>Maximum torque</b>		Up to 5000 Nm
<b>Rotation speed</b>		up to 68 /s °
<b>Position accuracy</b>		+/- 1 Arc Min
<b>Electrical connection</b>		400V 50Hz 16A CEE
<b>Power consumption</b>		Approx. 7kVA
<b>Interface to the robot</b>		EtherCAT / network cable
<b>Power servo drive</b>	<b>250 kg</b>	2kW tilting axis 2kW turning axis
	<b>500 kg</b>	3kW tilting axis 2kW turning axis
	<b>1000 kg</b>	3kW tilting axis 3kW turning axis
<b>Encoder system</b>		Multiturn absolute
<b>Gearbox</b>		2x i=264.6 Cycloidal gearbox
<b>Options</b>		Swivel gallows balancer 45° base 1m slideC

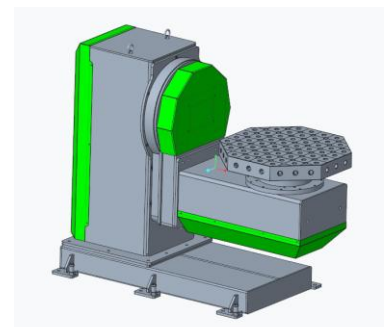
**L Type 250**



**L Type 500**



**L Type 1000**



## Load diagrams L Type 1000

L Type 500 and L Type 250 behave similarly, but with the respective weights.

